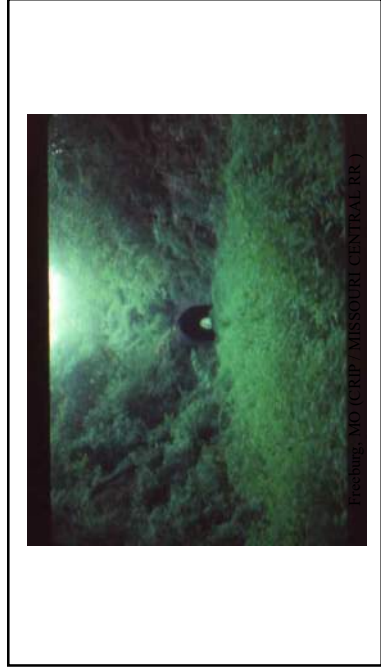



1



2



3




Coffeyville, Kansas ATSF/NIKT
Coffeyville Belt Line

AREMA SEMINAR

Copyright © 2021 AREMA. All material presented are property of AREMA.

4



GARY (TOLLESTON), INDIANA
IHB/NYC (PC) DUNE PARK BRANCH

AREMA SEMINAR

Copyright © 2021 AREMA. All material presented are property of AREMA.

5

Tech Tip:



Fairworth www.fair.com CSX

Copyright © 2021 AREMA. All material presented are property of AREMA.

AREMA SEMINAR

6

Coffeyville, KS

Coffeyville Belt Railroad (ATSF/MKT 1903)



Copyright © 2021 AREMA. All material presented are property of AREMA.

AREMA
SEMINAR

7

Understanding What Railroads Are

(Crash course condensed version)

- Charters
 - (A) Initial Regulation
- Regulation (pre & post Staggers Act, 1983)
- Common Carriers Defined (Class 1's, Regionals, Shortlines, Industrials)
 - (A) ICC vs. AAR Classification
- Interurban & Transit
- Logging & Mining Railroads
- Funiculars / Inclined Railroads
- Mileage of all gauges in the US "tops out" between 1915-1923 (254,000 miles in 1916)
 - Current mileage is just short of 183,000 miles (check figure, Standard & Poor's)
- Railroad genealogy / Chain of Title (Understanding History & Finance)

Copyright © 2021 AREMA. All material presented are property of AREMA.

AREMA
SEMINAR

8

Railroad Operating Structure

Typical, Military Origins to Today

- Operating
 - Trainmaster, Yardmaster, Superintendent, Train Crews, Dispatcher, Management, Asset Management, LAW, Lease & Contract, Accounting, Billing
- Maintenance / Engineering (M/W)
 - Division Engineer, Roadmaster, Chief Engineer, Trackman, Field Engineer, Signal and Communication Functions
- Equipment / Mechanical
 - Mechanical Foremen, Carmen, Shops

Copyright © 2021 AREMA. All material presented are property of AREMA.

AREMA
SEMINAR

9

Railroad Orientation

- Timetable vs. Geographic / Compass Direction
- District / Division / Subdivision / Line Segment
- Line Segments / Valuation Sections (ICC Parceling)
- Railroad Slang (Skip)
- Safety Rules / Testing / Requirements



Copyright © 2021 AREMA. All material presented are property of AREMA.

AREMA SEMINAR

10

Evidence and Official Record

- Looking Beyond the Courthouse
- Surveyors collect, examine & evaluate "EVIDENCE", they are not "Judge and Jury" (Even though at times we ought to be)
- The assessor's map is "a best guess estimate" - It should not be gospel !
- Official record does not automatically imply that it will be found in the local courthouse!
- Local courthouses are often blind to state and federal record, especially when it comes to railroads. (if you can, note how that public crossing came to be, especially with development plats and boundary plats.....FOR THE RECORD!)

Copyright © 2021 AREMA. All material presented are property of AREMA.

AREMA SEMINAR

11

Federal Laws and Regulations



- Acts of 1862, 1864, 1866, 1872, 1875 (the 10/20 mile limit checkerboard & across vacant land (Illinois Swamps))
- Interstate Commerce Act of 1913
 - Staggers Act of 1983
 - Deregulation / Shortline Exemptions from 49-CFR-1201
- Transportation Efficiency Acts
- Titles 16, 43 and 49 of the Federal Revised codes (CFR's)

Copyright © 2021 AREMA. All material presented are property of AREMA.

AREMA SEMINAR

12

State Laws



- Fence & Livestock (Discussed LATER, Revised Statutes...) 625 ILL Comp. Stat. 5/18c-7504
- Statute Side Clearance (how oddly has no state law (lapsed), railroad determines, ILLINOIS wisely chose to codify)
 - TITLE 92 I.A.C.
- AREMA Chapter 28 *
 - (Clearance Tables by state)
- The Ag Industry Issue (Ethanol Plants, etc.)



*Revised Chapter 28 of the AREMA MRE due out in 2025

Copyright© 2021 AREMA. All material presented are property of AREMA.



ICC Uniform System of Accounts

49CFR1201

- This single government regulation gave today's surveyor the following to use as evidence:
 - ICC CADASTRE (Validation maps, station, R/W, Land & other maps)
 - VAL map index maps and overview to railroad in 1918
 - ICC Valuation Order #7 ...land schedules
 - ICC Corporate structure valuation statements (family tree)
 - ICC Field notes (title, improvements, audits, appraisal)
 - Uniform standards between railroads
 - Collection of applicable maps & records of the time

Copyright© 2021 AREMA. All material presented are property of AREMA.



ICC Uniform Series of Accounts

Mapping Instructions

- ICC General Order #1 (1914) mapping instructions
- ICC General Order #4 (1915) field survey parties
- ICC General Order #7 (1916) land schedules
- Please download David Pfeiffer's excellent research text at: <http://www.rhishistorical-archives.com/rockville-md/>
- The published US GPO RIP-91 et al are being phased out by PDF versions on the National Archives Website (also see RIP-112 (GLO/BLM) and RIP-116 (Cartographic Section) research papers...) <https://www.archives.gov/research/catalog/mgc-preview>
- <https://www.familysearch.org/library/books/records/item/563553-records-relating-to-north-amer-ican-railroads-national-archives-reference-information-paper-91>

Copyright© 2021 AREMA. All material presented are property of AREMA.



ICC Uniform System of Accounts

- **49CFR1201**
- Impetus for railroads to catalog all improvements to verify
- Addition and betterments accounting system
- Depreciation was not allowed 1913 until 1983 & Staggers Act!!
- Those railroads "so valued"
 - (Turned in a complete set of maps schedules & accounting)
 - http://metzlof.pennsvtr.com/lcc/index/lcc_1.htm
 - (PDF OF RICE INDEX IN YOUR PDF LIBRARY/MATERIALS)
 - <http://www.nara.gov/publications/prologue/railrd1.html>
 - [HTTP://WWW.NHRS.ORG](http://WWW.NHRS.ORG) (pfeiffer nara paper)



Copyright© 2021 AREMA. All material presented are property of AREMA.

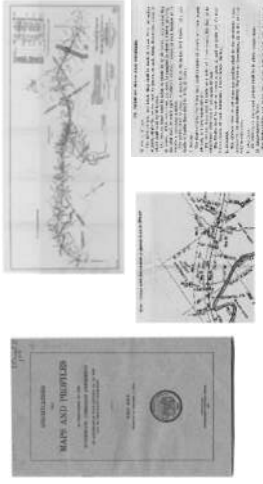
ICC Uniform System of Accounts

- Direct outcome of ICC Act of 1913
- VAL Maps (under ICC General Order #1) were created as an "accounting tool"
- Accountants make lousy surveyors, the rules under ICC G.O. #1 have come to haunt surveyors relating to these maps ever since
- The Act (under 49-CFR-1201) is more to level the playing fields in a tax sense than for the benefit of surveyors and mappers... "VALUATION"!
- **ALL STATES ASSESS TAXES UNDER THIS SYSTEM ... THE RATES ARE SLIGHTLY DIFFERENT BY STATE (MY BEING THE MOST EXPENSIVE) ... SUBJECT TO FEDERAL REVIEW AND ADJUSTMENT. COUNTY GOVERNMENT DOES NOT ASSESS DIRECTLY (THEY SEE A FEDERAL/STATE DISBURSEMENT)**



Copyright© 2021 AREMA. All material presented are property of AREMA.

ICC General Order #1



Copyright© 2021 AREMA. All material presented are property of AREMA.

Valuation Map Key Index (typical)

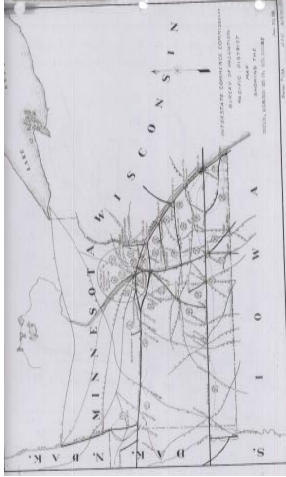


Copyright 2021 AREMA. All material presented are property of AREMA.

AREMA
SEMINAR

19

ICC GO-20

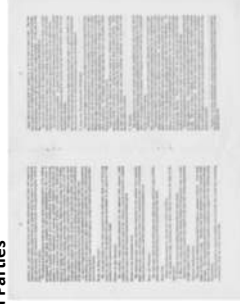


Copyright 2021 AREMA. All material presented are property of AREMA.

AREMA
SEMINAR

20

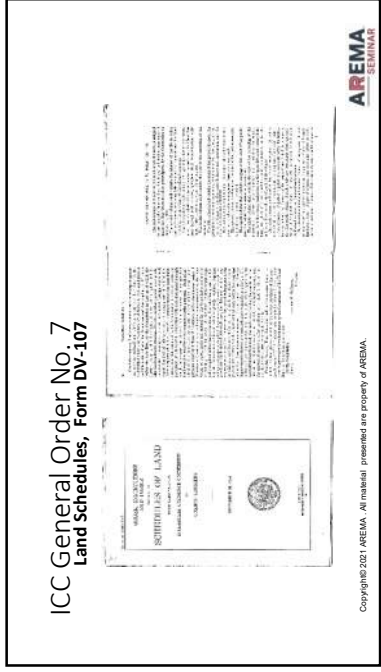
ICC General Order No. 4 Instructions to Field Parties



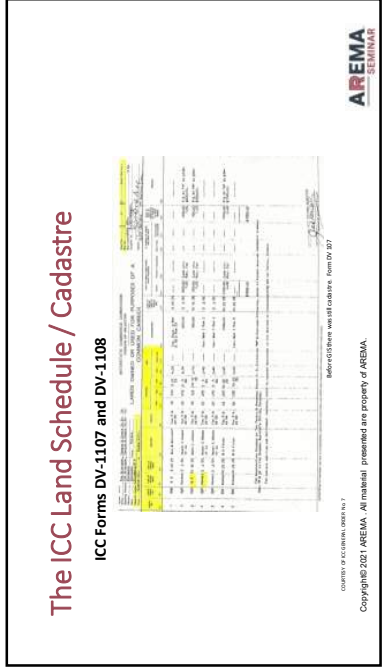
Copyright 2021 AREMA. All material presented are property of AREMA.

AREMA
SEMINAR

21



22



23



24

On To Part 3



Copyright © 2011 AREMA. All material presented are property of AREMA.

AREMA
SEMINARS
